

May  
2001



## NEWS AND INFORMATION

Professor Moshe Ben-Akiva of MIT is hosting a one-week course on "Individual Choice Behavior: Theory and Application of Discrete Choice Analysis to Consumer Demand and Market Share," June 11-15, 2001. Course registration, contact information and course description are available at <http://web.mit.edu/professional/summer/courses/management/14.61s.html>.

*Planning Theory* is an international peer-reviewed forum for the critical exploration of planning theory. The journal will publish the very best research covering the latest debates and developments within the field. A core publication for planning theorists, the journal will also be of considerable interest to scholars of human geography, public administration, administrative science, sociology and anthropology. Topics discussed will include planning methods, planning and equity, aesthetics, utopias and planning, and the boundaries of planning theory. Submissions of papers are invited to Diane Tustin, Editorial Administrator, Department of City and Regional Planning, Cardiff University, King Edward VII Avenue, Cardiff CF103WA, UK, E-mail: [Tustin@cf.ac.uk](mailto:Tustin@cf.ac.uk). More information can be found at <http://www.sagepub.co.uk/journals/Details/j0387.html>.

## AWARDS, PRIZES AND COMPETITIONS

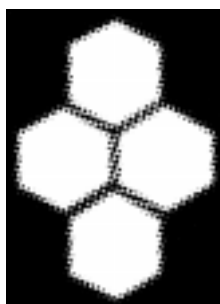
RACHEL S. FRANKLIN, UNIVERSITY OF ARIZONA, NAMED TO RECEIVE SECOND ANNUAL BENJAMIN H. STEVENS GRADUATE FELLOWSHIP IN REGIONAL SCIENCE  
Rachel S. Franklin, doctoral student in the Department of Geography and Regional Development at the University of Arizona, has been selected the winner of the competition for the second annual Benjamin H. Stevens Graduate Fellowship in Regional Science. The Fellowship will provide a \$16,800 one-year

stipend to support Franklin in her research on the causes of variation in regional fertility rates in Italy. The dissertation is titled: "Temporal and Spatial Variations in Italian Regional Fertility: An Assessment and Explanation." Professors David A. Plane and Brigitte Waldorf of the University of Arizona's Department of Geography and Regional Development are the dissertation supervisors. The Fellowship is awarded in memory of Dr. Benjamin H. Stevens, an intellectual leader whose selfless devotion to graduate students as teacher, advisor, mentor, and friend had a profound impact on the field of regional science. A fundraising effort to increase the Fellowship's endowment is ongoing. Donations should be sent to: The Stevens Fellowship Fund, First Busey Trust and Investment Company, P.O. Box 3309, Urbana, IL 61826-3309 USA. Checks should be drawn to The Stevens Fellowship Fund. Further information about the Fund may be found at the Ben Stevens memorial website: <http://web.bryant.edu/~pnorton/resources/memorial.html>.

The Stevens Fellowship is administered on behalf of the North American Regional Science Council by a Committee consisting of Professor Marcus Berliant, Economics, Washington University in St. Louis; David Boyce, Civil and Materials Engineering, University of Illinois at Chicago; Maureen Kilkenny, Economics, Iowa State University; Michael Lahr, Center for Urban Policy Research, Rutgers University; Ronald Miller, Regional Science Program, University of Pennsylvania; and David Plane, Geography and

## IN THIS ISSUE

NEWS AND INFORMATION	1
AWARDS, PRIZES AND COMPETITIONS	1
COMMUNICATIONS AND LITERATURE	2
CONFERENCE NEWS	
REMINDERS	3
CALLS FOR PAPERS	5
LIFE MEMBERS OF RSAI	6





## REGIONAL SCIENCE ASSOCIATION INTERNATIONAL

An interdisciplinary, international organization focusing on understanding the growth and development of urban, regional, and international systems.

### Headquarters

*Executive Director:* Kieran P. Donaghy  
*Assistant Director:* Beth Carbonneau  
Bevier Hall, Room 83  
905 South Goodwin Avenue  
University of Illinois at Urbana-Champaign  
Urbana, Illinois 61801-3682, USA  
Phone: 217-333-8904  
Fax: 217-333-3065  
Email: [RSAI@uiuc.edu](mailto:RSAI@uiuc.edu)  
web page: <http://rsai.geography.ohio-state.edu/rsai/homepage.htm>

### International Council

<i>President:</i>	Geoffrey J.D. Hewings
<i>Vice President:</i>	vacant
<i>Immediate Past President:</i>	Hirotaida Kohno
<i>Executive Director:</i>	Kieran P. Donaghy
<i>ERSA Councillors:</i>	Franz Josef Bade [1999-2001] Juan Cuadrado-Roura [2001-2003] Borje Johansson [2001-2003]
<i>NARSC Councillors:</i>	Brigitte Waldorf [2001-2003] Geoffrey J.D. Hewings [2000-2001] John Rees [2000-2002]
<i>PRSCO Councillors:</i>	Hirotaida Kohno [2001-2003] John Quigley [1999-2001] Jorge Serrano-Moreno [2000-2002]
<i>Councillors-at-Large:</i>	John H.LI. Dewhurst [2000-2002] Kieran P. Donaghy [2000-2002] Manfred Fischer [1999-2001] Art Getis [2001-2003] Maureen Kilkenny [1999-2001] Angelo Rossi [2001-2003]
<i>Treasurer:</i>	Andrew J. Krmeneč
<i>Archivist:</i>	David E. Boyce
<i>Ex-Officio:</i>	
<i>Editors, Papers in Regional Science</i>	
Editor-in-Chief & European Editor:	Raymond J.G.M. Florax
North American Editor:	Jean-Claude Thill
Pacific Editor:	Jacques Poot
Book Review Editor:	Brigitte Waldorf
<i>RSAI Newsletter Editor:</i>	Kieran P. Donaghy
<i>RSAI Web Page Editor:</i>	Randall W. Jackson

**Submission Information:** All materials for submission should be transmitted in electronic format, either via email, email attachment, or disk. Files may be submitted in Word, WordPerfect, rich text or ASCII formats. If your file contains special characters (e.g. international characters) please also submit a printed copy, either by postal mail or fax. Materials received only in printed format are not guaranteed for publication. Material for inclusion in RSAI NEWS should be received by the editors no later than December 1 for the January issue, April 1 for the May issue, or July 1 for the August issue.

Regional Development, University of Arizona. The Committee thanks all of the students who entered the competition this year, as well as their dissertation directors. Faculty at all North American Ph.D. programs are asked to encourage their brightest students to apply for the third annual Stevens Fellowship, which will support the winning student's dissertation research for the 2002-2003 year. The application deadline is February 15, 2002. Full submission guidelines may be found on the Ben Stevens memorial website <http://web.bryant.edu/~pnorton/resources/memorial.html>.

### CALL FOR SUBMISSIONS: UPS-SOLA DISSERTATION AWARD

The Section on Location Analysis (SOLA) of INFORMS wishes to announce a call for submissions for the bi-annual UPS-SOLA Dissertation Award given to the author of the best dissertation in the area of Location Analysis. Dissertations written in English, completed between July 1, 1999 and June 30, 2001, and dealing with issues related to facility location are welcome. Students from all disciplines, such as Management Science, Industrial Engineering, Geography, and Economics, are welcome to apply. All applicants should submit (i) a cover letter stating the name of their supervisor(s), (ii) a letter from their supervisor supporting their submission, (iii) a two-page summary of their dissertation work, and (iv) four copies of the dissertation itself. Courtesy of United Parcel Service (UPS), cash prizes will be awarded to the winner and any runners-up. The applicants will be judged by a panel of three experts and announcement of the results and presentation of the awards will take place during the INFORMS Conference in Miami Beach in Fall 2001. Interested students should submit completed packages no later than July 1, 2001 to Dr. H.A. Eiselt, Chair of UPS-SOLA Dissertation Award Committee, Faculty of Administration, University of New Brunswick, P.O. Box 4400, Fredericton, New Brunswick, E3B 5A3, Canada.

### RSAI DISSERTATION CONTEST

The Association invites submission of dissertations completed in the field of Regional Science in 2000 to the annual dissertation competition. Two copies of the dissertation and a letter of nomination from the research supervisor should be sent to Professor Kenneth B. Newbold, School of Geography and Geology, MacMaster University, Hamilton, Ontario 4K1, CANADA.



### COMMUNICATIONS & LITERATURE

### RECENT BOOKS BY MEMBERS OF RSAI

Badcock, Blair and Andrew Beer, *Home Truths: Property Ownership and Housing Wealth in Australia*. Melbourne: Melbourne University Press, 2001.

Batey, Peter and Peter Friedrich, eds., *Regional Competition, Advances in Spatial Science*. Heidelberg: Springer, 2000.

Friedrich, Peter and Sakari Jutila, eds., *Policies of regional Competition. Schriften zur öffentlichen Verwaltung und öffentlichen Wirtschaft, vol. 161*. Baden-Baden: Nomos, 2000/2001.

Gilly, J.P. and A. Torre, eds., *Dynamiques de Proximité*. Paris: L'Harmattan, 2000.

Lahr, Michael L. and Ronald E. Miller, *Regional Science Perspectives in Economic Analysis: A Festschrift in Memory of Benjamin H. Stevens. Contributions to Economic Analysis Series, 249*. Amsterdam and New York: Elsevier Science, 2001.

Lahr, Michael L. and Erik Dietzenbacher, *Input-Output Analysis: Frontiers and Extensions*. London: Palgrave, 2001.

Mangan, John, *Workers Without Traditional Employment: An International Study of Non-Standard Work*. Cheltenham, UK and Northampton, MA, USA: Edward Elgar Publishing, 2000.

Roy, John and Wilfried Schultz, eds., *Theories of Regional Competition. Schriften zur öffentlichen Verwaltung und öffentlichen Wirtschaft, vol. 162*, Baden-Baden: Nomos, 2001.



## REMINDERS

### 32ND ANNUAL MEETING OF THE MID-CONTINENT REGIONAL SCIENCE ASSOCIATION, DULUTH, MN, MAY 31-JUNE 2, 2001

The Mid-Continent Regional Science Association will hold its 32nd annual meeting at the Duluth Holiday Inn, located in downtown Duluth, two blocks from Lake Superior. It will begin with a reception on Thursday night, May 31st at the Duluth Train Museum. Paper sessions will be held all day Friday through 12:30 PM Saturday. Additional information about the conference and the host city is available on the MCRSA web site: [www.oznet.ksu.edu/mcrsa](http://www.oznet.ksu.edu/mcrsa) or from John Leatherman, President, MCRSA, Office of Local Government, Kansas State University-Extension, Department of Agricultural Economics, 331 Waters Hall, Manhattan, KS 66506-4026. Phone: 785-532-4492, Fax: 785-532-6925, E-mail: [jleather@agecon.ksu.edu](mailto:jleather@agecon.ksu.edu).

### ANNUAL MEETING OF THE CANADIAN REGIONAL SCIENCE ASSOCIATION, JUNE 1-3, 2001

This year's conference of the Canadian Regional Science Association will be held at INRS-Urbanisation in Montreal

from Friday the 1st to Sunday the 3rd of June, concurrently with meetings of the Canadian Association of Geographers and Canadian Association of Economists, with whom programs will be coordinated and joint sessions held on Friday. More information may be obtained from Richard Shearmur, INRS-Urbanisation, 3465 Durocher, Montreal H2X 2C6, tel: 1-514-499-4052, fax: 1-514-499-4065. Programme updates and other information will be available on the web site <http://acsr.inrs-urb.quebec.ca/>.

### UDDEVALLA SYMPOSIUM 2001:

#### REGIONAL ECONOMIES IN TRANSITION, JUNE 14-16

An international symposium on regional economies in transition will be held June 14-16, 2001 in Vanersborg at the University of Trollhättan/Uddevalla in Sweden. The symposium has the following three themes: 1) Regional Labor Market in Transition, 2) Theory, Data, and Methodology in Regional Modelling, and 3) Impacts of Changes in the Regional Environment: Policy, Infrastructure, and Internalization. More information about each theme or the symposium will be found at [www.udd.htu.se/Uddevalla\\_workshop/](http://www.udd.htu.se/Uddevalla_workshop/) or may be obtained from Irene Johansson, University of Trollhättan/Uddevalla, Department for Studies of Work, Economics and Health, PO-Box 795, SE -452 26 UDDEVALLA, tel: +46 522 65 60 02, fax: +46 522 65 60 99, E-mail: [Irene.Johansson@htu.se](mailto:Irene.Johansson@htu.se). The symposium is hosted by the University of Trollhättan/Uddevalla in cooperation with Jonköping International Business School, Sweden, The Institute of Public Policy at George Mason University, USA, and the Nordic Section of RSAI.

### 8TH NATIONAL MEETING OF APDR, THE PORTUGUESE SECTION OF THE EUROPEAN REGIONAL SCIENCE ASSOCIATION, JUNE 29-JULY 1, 2001

The 8th national meeting of APDR will be held in Vila Real, the heart of the Port Wine Region, from the 29th of June to the 1st of July. About 100 papers from associates and colleagues from other countries are expected. The languages of the meeting are Portuguese, Spanish, French, and English. The main theme of the meeting will be "Development and Ruralities in Europe," but the organizing committee will accept papers in other areas of regional science. Presently, the proposed themes for parallel sessions include agriculture and ruralities; EU regional policies and the development of regions; new technologies and regional development; human resources, employment and regional competitiveness; environment and sustainable development; the problem of border regions in the EU; and entrepreneurship and local development. Scholars wishing to participate should use the registration form at the web site: <http://www.apdr.pt/pt/VIIIencontro.htm#inscricao>, or contact Dr. J.P. Barbosa de Melo, Secretary of APDR, APDR - VIII Encontro, Apartado 3060, 3001-401 COIMBRA, PORTUGAL, tel: (+351) 239 820 533, fax: (+351) 239 820 750, e-mail: [apdr@mail.telepac.pt](mailto:apdr@mail.telepac.pt), web site: <http://www.apdr.pt/>.

### INTERNATIONAL SYMPOSIUM ON THE RURAL ECONOMY OF CHINA AFTER WTO, MAOMING CITY, JUNE 29-JULY 2, 2001

An international symposium, entitled 'Rural Development in China in the New Century,' is scheduled to convene in Maoming City, Guangdong Province, from 29 June to 2 July, 2001. It will be

jointly sponsored by the Rural Development Institute of the Chinese Academy of Social Sciences (RDI-CASS), Maoming Municipal Government, and The China Society of Foreign Agricultural Economy (CSFAE). China will very possibly join the World Trade Organization (WTO) in 2001. The focus of the 4-day symposium will be on the following topics: the new opportunities and challenges facing the agricultural sector after China's entry into the WTO and its impacts on the rural economy; adjustment of the structure of agricultural production in China, especially in the coastal region of the country; evolution of world agricultural trade rules in the WTO framework and prospects in the next round of negotiations; and changes in agricultural policies in both developed and developing countries, their impacts on liberalization of agricultural trade, and their relevance to China.

The Symposium will also be concerned with a wide range of other related socioeconomic problems, case studies, and successful stories about rural development in different economies or their lessons. Studies of cases in the densely-populated economies are especially welcomed.

The Venue of the Symposium, Maoming City, is near Guangzhou, and is situated in the southwest of Guangdong Province. The city is famous with rural industries and tropical fruits. For further information, please contact: Ms. Zhang Hong (Coordinator), Rural Development Institute of the Chinese Academy of Social Sciences, No. 5 Jianguomennei Dajie, 100732, Beijing, China, Phone: 0086-10-6527 5067, Fax: 0086-10-6513 7559, Email: Keyanchu@cscrri.cass.net.cn

#### 17TH PACIFIC CONFERENCE RSAI, PORTLAND, OREGON, JUNE 30 - JULY 4, 2001

The 17th Pacific Conference of the Regional Science Association International will be held from June 30th to July 4th in Portland, Oregon USA at the Embassy Suites Hotel in downtown Portland. Papers on any regional science topic are welcome. Special themes for the PRSCO17 conference include: sustainable cities, urban growth management, downtown revitalization, trade in the Pacific Rim: ports and intermodalism, urban transportation: alternative futures, evolution of high technology districts, regional impacts of immigration, aging, and changing household composition, the geography of the internet, substitution and complementarity of telecommunications and transportation, transformation of resource-based economies, evolution of settlement systems on the Pacific rim, emerging challenges to agriculture in urban societies, sustainable tourism, and international investment and financial markets.

The conference is hosted by the Western Regional Science Association. For full conference information please visit the web site at <http://geog.arizona.edu/wrsa>.

#### 41ST CONGRESS OF THE EUROPEAN REGIONAL SCIENCE ASSOCIATION, AUGUST 29-SEPTEMBER 1, 2001

The Croatian Section of the European Regional Science Association will host the 41st congress of the Association in Zagreb. The general theme of the congress will be "European Regional Development Issues in the New Millennium and Their Impact on Economic Policy." Thematic areas include regional science methods; sustainable economic growth and production

factors; regional disparities, problems, and policies; urban economy, financial issues; globalizations and regional/local identity; human resources and regional labor markets; socio-economic cohesion and regional/local development; and e-business and regional development. The congress venue will be the Faculty of Economics at University of Zagreb. There will be a reduction in fees for those registering before June 1st.

Detailed information can be found at <http://www.hgk.hr/ersa41>.

#### 31ST ANNUAL CONFERENCE OF THE REGIONAL SCIENCE ASSOCIATION INTERNATIONAL: BRITISH & IRISH SECTION, SEPTEMBER 5-7, 2001

The 31st annual conference of the British and Irish Section of RSAI will be held in Durham Castle, UK. The main conference themes are: Transport Infrastructure and Economic Development; Telecommunications, E-Commerce and Regional Implications; Rural Service Provision; Regional Migration and Housing Markets; Spatial Statistics; and Artificial Intelligence and Regional Science. High quality papers in all areas of regional science are welcome, however.

Further information can be found on <http://www.weru.org.uk/dur2001.htm>.

#### EISENERZ HOSTING TWO EVENTS ON "REGIONAL POLICIES IN EUROPE," SEPTEMBER 2001

The Institute of Geography and Regional Science will host two events of an annual series on "Regional Policies in Europe" - the International Symposium and the Summer University - which will take place in Eisenerz, Austria this September for the third time! The three week Summer University program "Learning for the Regional Future: From Idea to Application" is designed as a know-how-transfer institution for research results into practice. The focus on practice, which is of particular concern, will be achieved by cooperating with political authorities, administration officials, experts in economy and social studies as well as by working with media and cooperating with non-profit organizations.

Module 1 "Crossing Borders – Challenges and Opportunities" (Sept., 3-6) is dealing with different concepts of cross-border projects from the creation of ideas to the realization of the projects. Discussed topics include cross-border and transnational programs (e.g. Interreg), organizational structures as well as problem-solving strategies and instruments.

Module 2 "Marketing the Regions for Investment" (Sept., 10-13) is based on different investment models and will detail aspects of investments from the international to the enterprise level including examples. Special focus is given to the EU perspective (strategies, constraints and consequences).

Module 3 "Networking through linking People" (Sept., 17-20) is working with different cooperation models at the local and regional scale. The discussed topics include bottom-up-approaches, partnership models, democracy building and empowerment of local people as well as cultural aspects.

The International Symposium "Regional Policies in Europe - The Knowledge Age: Managing Global, Regional and Local

Interdependencies" (Sept., 21-23) is the closing highlight of the events. It will mainly focus on the effects of the shift from the information to the knowledge society, especially the diffusion of innovations and the empowerment of regions by strengthening their local potentials.

The Institute is able to provide a limited number of fellowships for partial funding for participants of Central and Eastern European countries. Please find further information about fees and fellowships in the program. The registration deadline for both events is June, 30th, 2001. The final program is available on the internet and the printed version can also be ordered by a short email. The proceedings of the International Symposium 1999 "Regional Policies in Europe - New Challenges, New Opportunities", are available now.

For further information please contact: Mag. Dr. Susanne Janschitz, Institute of Geography and Regional Science, University of Graz, Heinrichstrasse 36, A-8010 Graz, phone: ++43 316 380 8897, fax: ++43 316 380 9886 email: susanne.janschitz@kfunigraz.ac.at, internet: <http://www.kfunigraz.ac.at/geowww>

#### 2ND INTERNATIONAL CONFERENCE ON URBANIZATION, ENVIRONMENT, AND HEALTH IN DEVELOPING COUNTRIES, OCTOBER 12-14, 2001

The 2nd International Conference on Urbanization, Environment and Health in Developing Countries will be held at Peking University. The meeting will be held in cooperation with the Regional Science Association-China and many other international organizations. Persons interested in participating should submit a one-page abstract to Manas Chatterji, State University of New York at Binghamton, NY 13902, USA, tel 607-777-2475, fax 607-777-4422, e-mail: [mchatter@binghamton.edu](mailto:mchatter@binghamton.edu) or Professor Kaizong Yang, Dept. of Urban and Environmental Sciences, Peking University, Beijing, P.R.C., fax 86-10-62754648, e-mail: [ykz@urban.pku.edu.cn](mailto:ykz@urban.pku.edu.cn).

#### CONFERENCE ON NEW ECONOMIC WINDOWS: NEW PARADIGMS FOR THE NEW MILLENIUM, AN 'ECONOMICS AND COMPLEXITY' EVENT, SEPTEMBER 13-15, 2001.

A conference on 'new economic windows' will be held in Caserta, Salerno, Italy at the Università di Salerno, September 13-15 2001. Topics of the conference include applications of chaos theory in finance and economics, chaotic control and targeting, evolutionary games, econometric modelling of economic systems and financial markets, forecasting, fractal analysis, fuzzy sets, general-equilibrium models, models with explicit expectations and learning, neural networks and softcomputing. Further information may be obtained from the General Coordinator of the conference, Prof. Massimo Salzano at [salzano@unisa.it](mailto:salzano@unisa.it), or <http://www.unisa.it/NEW-Conference>.

#### 11TH INTERNATIONAL CONFERENCE OF RESER, OCTOBER 25-26, 2001

The Graduate School of Business in Grenoble is organizing the 11th International Conference of RESER, the European Network of Economic and Spatial Service Research. The theme of the conference, which will be held on the 25th and 26th of October, 2001, is "New Information Technologies and Service Activities:

Managerial, Economic and Regional Impacts of New Information and Communication Technologies on Service Activities." The main goal of the conference is to present and set up new research on the transformation of service firms organization due to the intensification of the use of information technologies and network communications. Papers will deal with managerial, strategic, economic, logistic, geographic and other aspects of this transformation. More information can be obtained by e-mail from [conf.reser@esc-grenoble.fr](mailto:conf.reser@esc-grenoble.fr) or by post to Annie Munos, Groupe ESC Grenoble, Marketing Department, 12, rue Pierre Semard - B.P. 127, 38003 Grenoble cedex 01 - FRANCE.

#### CALLS FOR PAPERS

#### 48TH NORTH AMERICAN MEETINGS OF THE REGIONAL SCIENCE ASSOCIATION INTERNATIONAL

NOVEMBER 15-17, 2001

The 48<sup>th</sup> annual North American Meetings of the RSAI, hosted by the Southern Regional Science Association (SRSA), will be held at the Westin Francis Marion Hotel in historic Charleston, S.C., Nov. 15-17, 2001. If you have an idea for a session or panel, please contact Frank Hefner, College of Charleston, the 2001 Program Chair. The deadline for submitting abstracts for presented papers is September 1, 2001. If you are interested in presenting a paper, please send an abstract of 100-200 words. Also include address, phone number, fax, and e-mail address for each author that will be attending the meeting. Send abstract (e-mail submission preferred) to: Frank Hefner ([hefnerf@cofc.edu](mailto:hefnerf@cofc.edu)), Frank Hefner, Department of Economics and Finance College of Charleston, Charleston, S.C. 29424, Tel: 843-953-8111; FAX: 843-953-5697

In addition, participants are encouraged to organize a session in an area of interest. Anyone who is interested in organizing a session, being a session chair, or being a discussant is encouraged to contact Frank Hefner as soon as possible for more information.

The rates at the Westin Francis Marion are \$129 for a single or double. The overflow hotel is the Embassy Suites, with a rate of \$175, single or double occupancy – with a suite, room sharing may be desirable. The Westin Francis Marion, originally opened in 1924, was at that time the largest and grandest hotel in the Carolinas. Named for General Francis Marion, the "Swamp Fox" of the American Revolution, the hotel recently reopened after a \$12 million National Trust award restoration. Rising 12 stories above the historic district, the hotel's guest rooms and suites offer spectacular views of Charleston's church steeples, antebellum mansions, and famous harbor. The magnificent gardens, house museums, antique shops, boutiques, restaurants and nightlife that make Charleston unique are all an easy walk from the hotel. The Embassy Suites was originally constructed in 1758 and is on the National Register of Historic Buildings. Shuttles from the airport to downtown hotels are reasonably priced at about \$17. Complete information on the November 2001 North American meetings of RSAI appears on the NARSC web site at <http://www.narsc.org>. (The conference registration form appears on page 7 of hard copies of this newsletter.)

**INTERNATIONAL CONFERENCE ON URBANIZATION, THE DIGITAL ECONOMY, AND ENVIRONMENTAL SUSTAINABILITY, WUHAN, CHINA, MARCH 29-31, 2002**

Peking University, China, the State University of New York at Binghamton, USA, the Regional Science Association of China, and many other national and international organizations are sponsoring a conference on urbanization, the digital economy, and environmental sustainability that will be convened in Wuhan, China March 29-31, 2002. The conference is predicated on the belief that the emergence of the digital economy provides an opportunity to revitalize theories, approaches and strategies of urbanization. Discussions will be focused on the effects of the emerging digital economy on the process of global urbanization, strategies for the development of cyber cities, as well as the critical issues of ensuring ecological safety and environmental sustainability. The conference is intended to provide a forum for the exchange of new thoughts and viewpoints relevant to urban construction and development in the milieu of globalization, knowledge and network economies. Participants are encouraged to submit proposals or abstracts for academic papers, forums, or round-table discussions, etc. relevant to the themes of urbanization, the digital economy, and environmental sustainability. The following topics are of particular interest: 1) regional science in the developing countries, 2) urbanization, environmental pollution, and health, 3) the planning of the digital economy, 4) the geography of the digital economy, 5) the effects of the digital economy on urbanization, 6) cyber cities, and 7) construction strategies for cyber cities. The Co-Chairs of the Organizing Committee are Professor Manas Chatterji, School of Management, University of New York at Binghamton, Binghamton, N.Y., 13902-6015, USA, (mchatter@binghamton.edu), Professor Yang Kaizhong, Department of Urban and Environmental Sciences, Peking University, Beijing 100891, P.R. China, (ykz@urbanpku.edu.cn). Persons interested in presenting a paper are encouraged to send a one-page abstract, which includes a complete contact address and telephone and fax numbers and e-mail address to one of the co-chairs. The registration fee is \$100 US for participants from developed countries and \$50 US for participants from low-income countries.

**INTERNATIONAL SYMPOSIUM ON LOCATION DECISIONS, JUNE 13-18, 2002, NEW BRUNSWICK**

Next year's International Symposium on Location Decisions (ISOLDE) will take place in New Brunswick, June 13-18, 2002. The first call for papers will be issued this year and the deadline for submissions will be towards the end of the year. The organizing committee of H.A. Eiselt, Gilbert Laporte, Antonio Antunes, Joao Coutinho, and John Current can be reached via [haeiselt@unb.ca](mailto:haeiselt@unb.ca).

**INVITATION TO RSAI MEMBERS FROM EAAE TO PARTICIPATE IN ZARAGOZA CONGRESS IN 2002**

The European Association of Agricultural Economists (EAAE) is a professional association with around 1,000 members spread across Europe. Founded 25 years ago, the objectives of the association are to promote scientific links between its members and to help them develop their scientific activities by means of triennial congresses, seminars (3 or 4 a year), and a scientific journal, *European Review of Agricultural Economics*. The next Congress of the Association will be held in 2002 in Zaragoza,

Spain, and the Executive Committee of the Association wishes to give international scientific associations with objectives and fields connected with those of EAAE the opportunity to present themselves (e.g., by means of a poster) or to take a more active part in the programme. Members of RSAI are encouraged to organize paper sessions on the regional or spatial dimension of such issues of interest to agricultural economists as European Regional Policy and its effects on agriculture, regional development and agriculture, and convergence and divergence among rural and urban areas or regions. There is an anonymous review process for acceptance of papers.

Interested parties should contact the chairman of the Zaragoza Congress Organizing Committee, Dr. Luis Miguel Albisu Aguado ([lmalbisu@aragob.es](mailto:lmalbisu@aragob.es)) or the President-Elect of EAAE, Yves Leon, Directeur de Recherche, Institut National de la Recherche Agronomique, Unite d'Economie et Sociologie Rurales, Rue Adolphe Bobierre, CS 61103 Rennes cedex, FRANCE, tel. (33) 2 23 48 53 93, fax. (33) 2 23 48 53 80, E-mail: [Yves.Leon@roazhon.inra.fr](mailto:Yves.Leon@roazhon.inra.fr).

**LIFE MEMBERS OF RSAI**

The following have purchased or been awarded life memberships in RSAI:

1. John Current
2. Vlasta Dugonjic-Rodwin
3. Art Getis
4. Kingsley Haynes
5. Geoffrey Hewings
6. Yong Lao
7. Peter Nijkamp
8. David Plane
9. Karen Polenske
10. Glenn Rogers
11. William Strange
12. Harold F. Williamson, Jr.

**2000 MEMBERSHIP DIRECTORY**

The 2000 Membership Directory can be accessed at the bottom part of 'Membership Information' on the RSAI web site. The directory is separate from the skeleton list of 2001 members.

**EDITORS NOTE**

Please note that Randall Jackson continues to maintain the primary RSAI web site. Any material you wish to post there should be directed to him at

[RSAI@geography.ohio-state.edu](mailto:RSAI@geography.ohio-state.edu).

Electronic submissions (text or attachment) only, please.

Please send all electronic submissions of material for the *RSAI News* directly to [RSAINews@uiuc.edu](mailto:RSAINews@uiuc.edu) and copy all submissions to [RSAI@geography.ohio-state.edu](mailto:RSAI@geography.ohio-state.edu) so that they also may be posted on the web site.

You can ensure uninterrupted delivery of this newsletter and Papers in Regional Science

by completing this change of address form and mailing it to:  
Regional Science Association International  
Bevier Hall Room 83  
University of Illinois at Urbana Champaign  
905 S. Goodwin Avenue  
Urbana, IL 61801-3682 USA

***RSAI Member Change of Address***

Name: \_\_\_\_\_

Address: \_\_\_\_\_

City: \_\_\_\_\_

State/Province: \_\_\_\_\_

ZIP/Postal Code: \_\_\_\_\_

Country: \_\_\_\_\_

Phone: \_\_\_\_\_

Fax: \_\_\_\_\_

E-mail: \_\_\_\_\_

**REGIONAL SCIENCE  
ASSOCIATION  
INTERNATIONAL**

University of Illinois  
Bevier Hall, Room 83  
905 South Goodwin  
Ave.  
Urbana, IL 61801-  
3682  
USA

